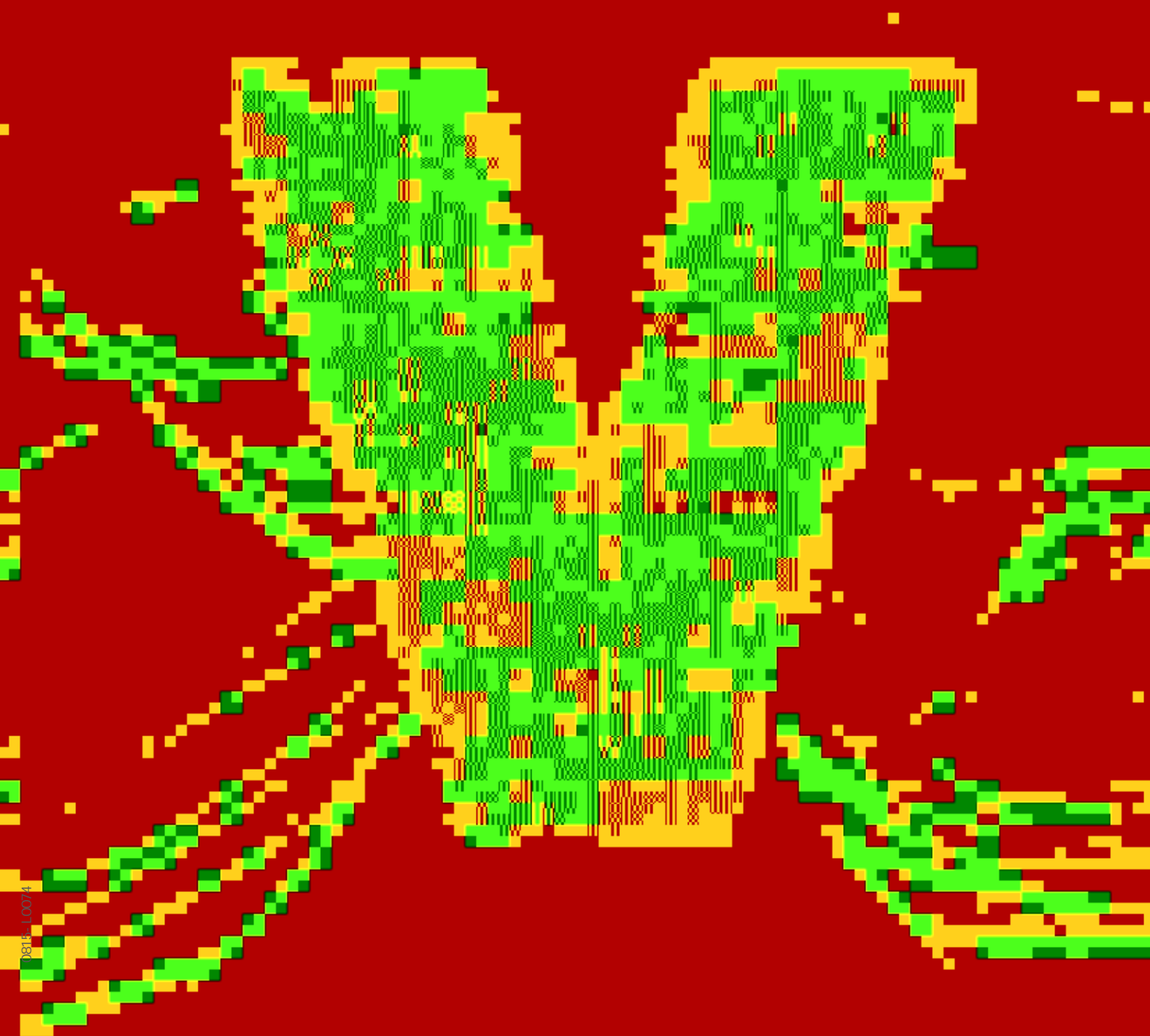


CHINA BUILDING MATERIAL MAGAZINE

中国建材杂志

· 2016 9 108 ·





中国建材集团有限公司
China National Building Material Group Co.,Ltd.



8 26

“ ”

CRH

“ ”

“

”

“

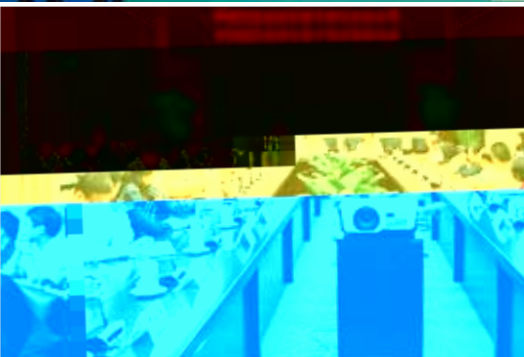
”

“

”



Conten



17

—— “ ”

21

23

26

30

34

36

38

40

42

45

46

48

12

SDGs

23

23

23



8 26

9 30



5500

14

500



“ ”

10 11

350

20





500



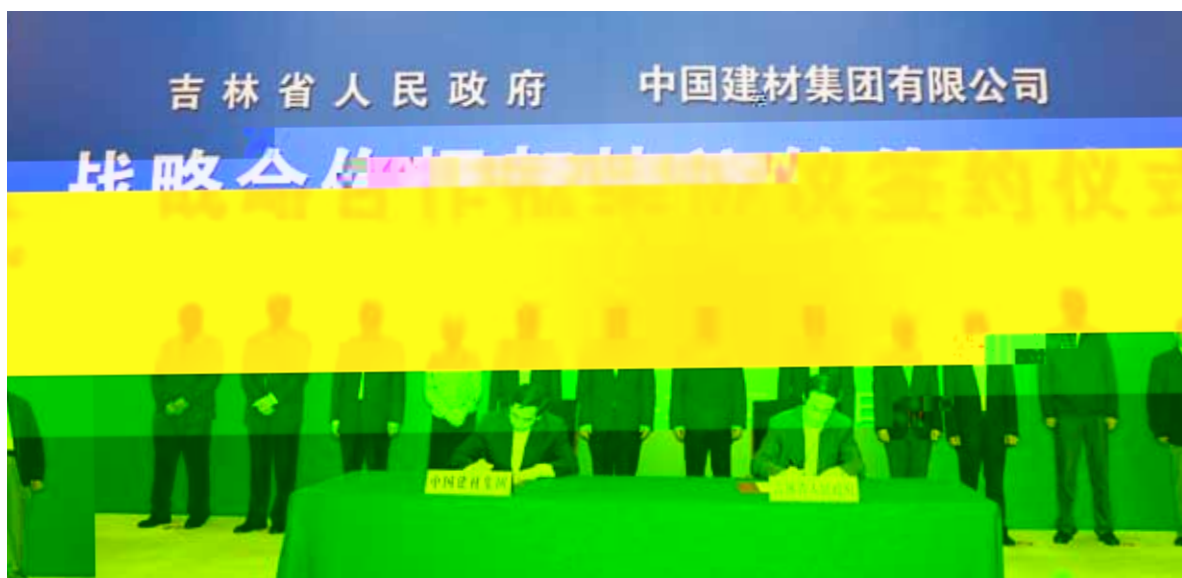
9 13
CRH

CRH

CRH

CRH





9 26



9 23

50

3

5 30

3.09% 7 20

3.45%

2 4 P





8 26



GE



30

CRH

CNBM SINOMA

EPC

SINOMA

EPC

46

+

BNBM HOME

EPC

5 10

N+1

14

6- 8



20



4

12

150





Ö

£

“ ”
“ ”

“ ”





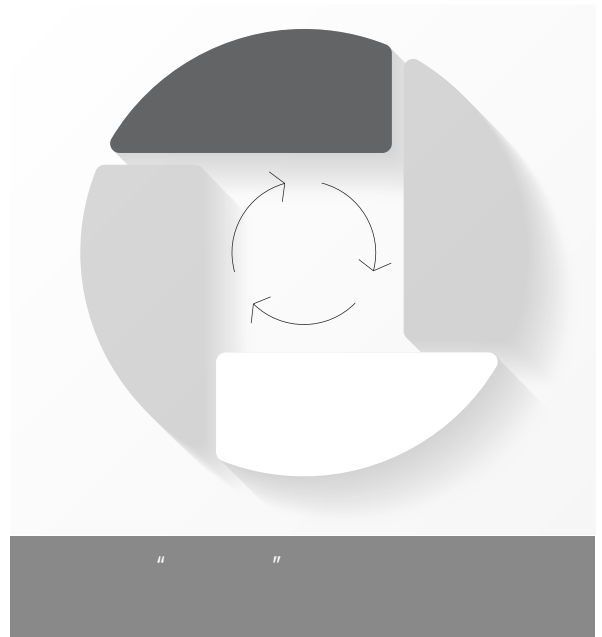


32.5

34

32.5

50%



200

32.5
42.5

34

2020

66

99



34

32.5 5.5



K

KPI

#

KPI

KPI

KPI

h-K

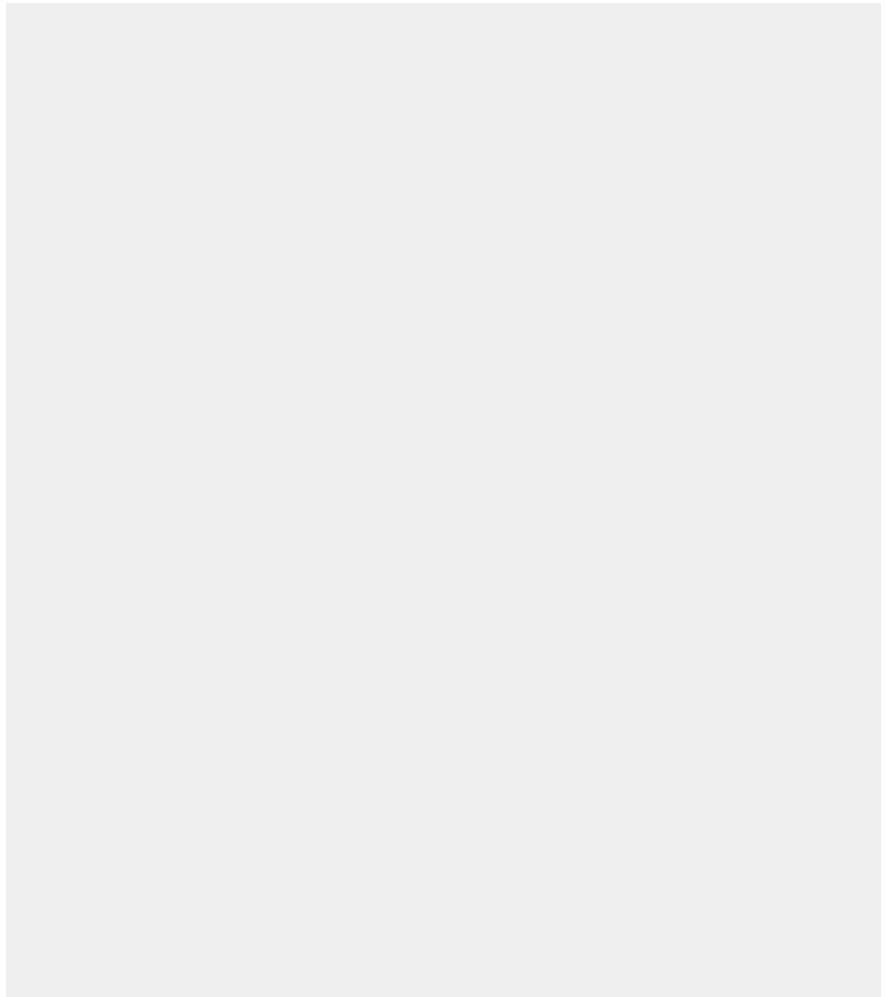
K

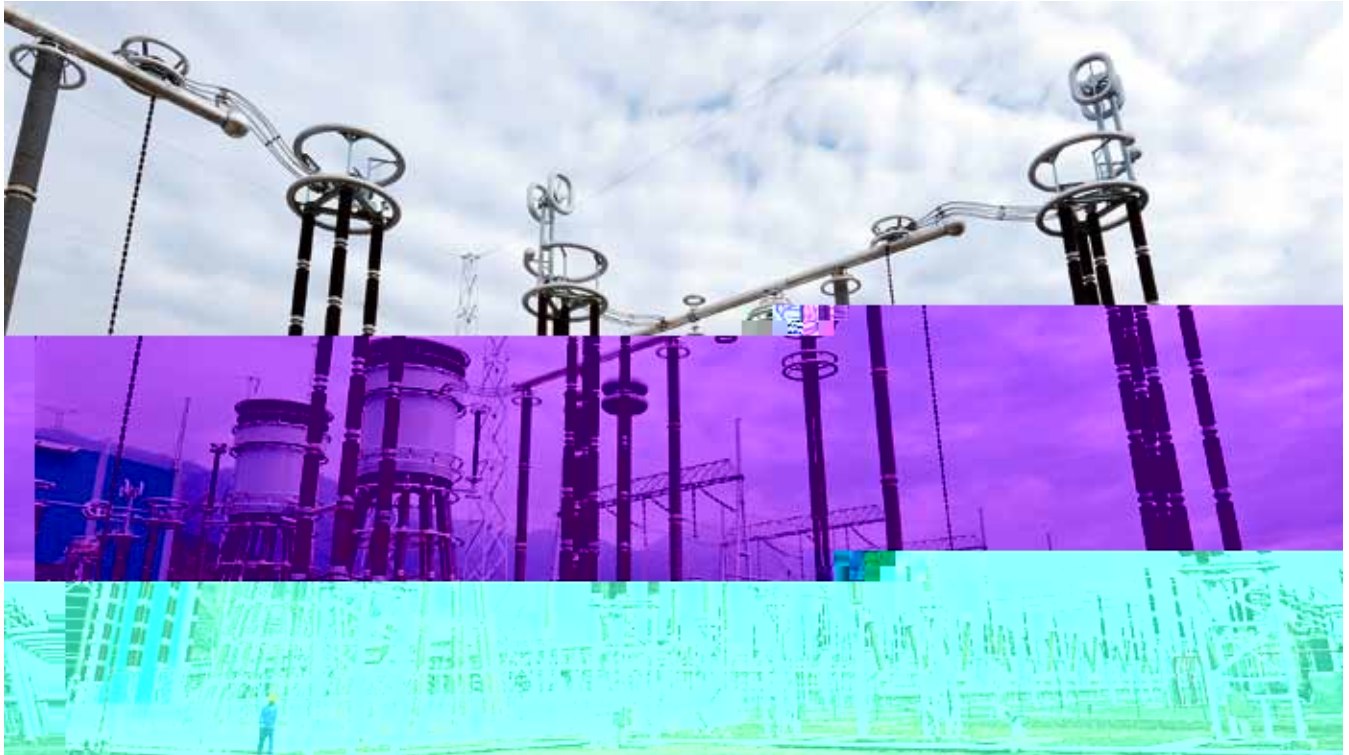
bK

- Ø b

KPI

A =





± 800KV

550
1100

2016 5

± 1100

10

± 1100

3300
12

6

12000

± 1100

800



2005

IEC-130

2005

50%

2008

35%

± 1100
1100KV

1000kV

800kV

ABB

863

1100kV

2009



2010

1100K V

12 10 260
3

9

2014

50 2
15

50%
1100K V

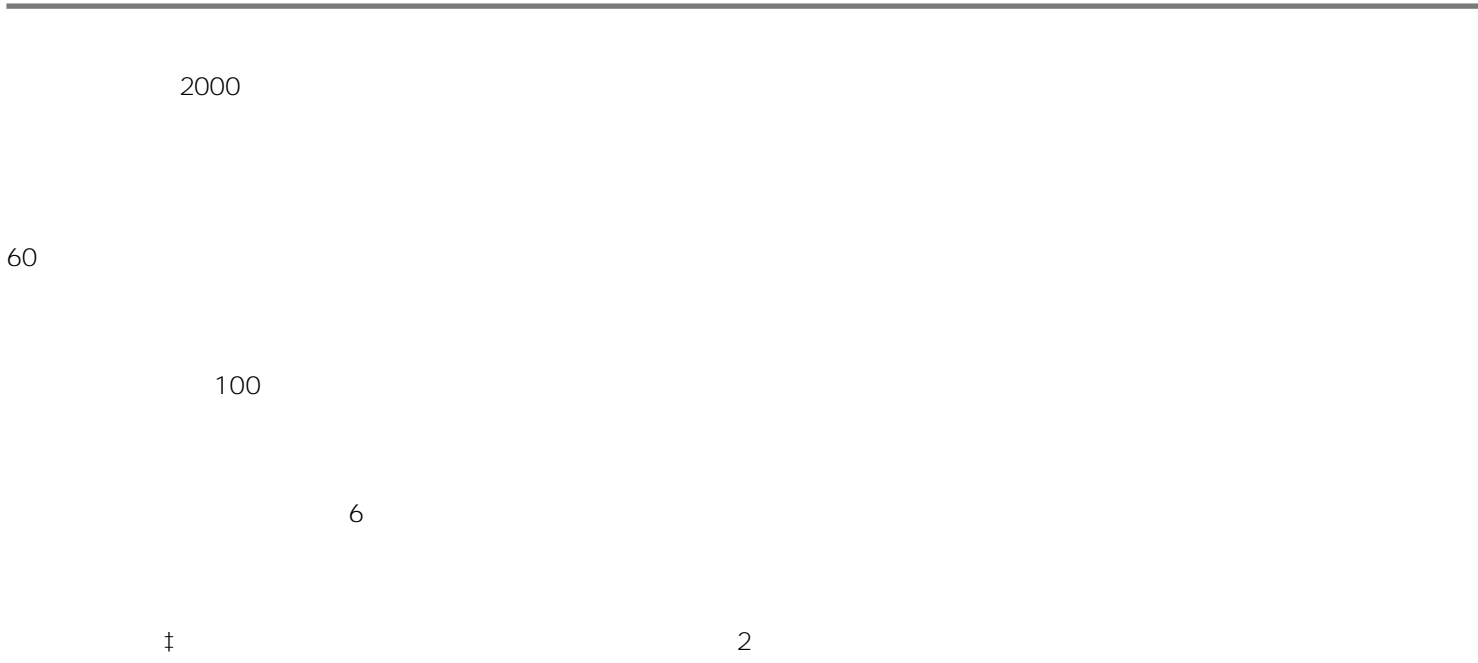
.....

30

2 3

2013

2015



2015

HSE
HSE

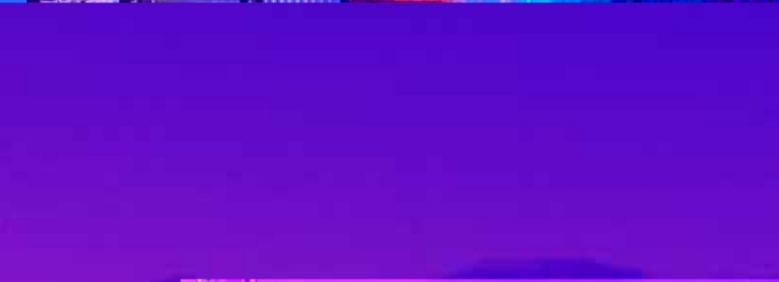


\ z

Æ



2016 7



12

10

50

100

120

15~20

/

11

2015

K

10%

5%

5%

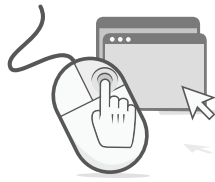


“

”

“

”



9 21

200

“

SDGs

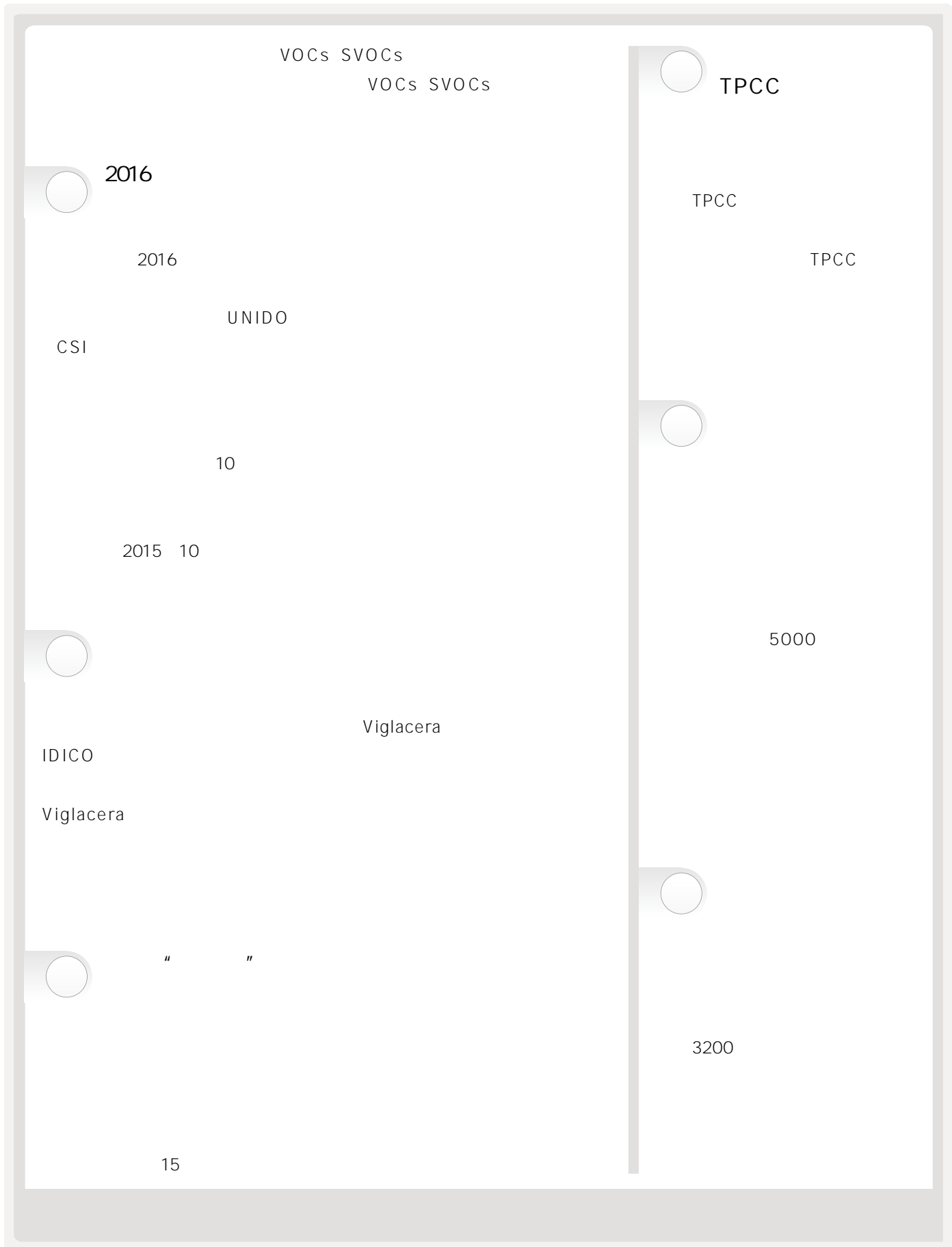
”

2016

SDGs

SDGs

17





7

4

980

2005 5 17

10



长征集

80

榮



責 任 績 效 創 新

敬 忠 感 恩 謙 虛 得 體

中國建材集團領導幹部行為準則