

中国建材通讯

• 2020 155-156 •



0819--L0074

// // // //

2020

导原则

\$" \$" ' "'

\$" \$"

' "

Contents

2020 155- 156

	17	1	
2			
100036			
010- 68138115		4	
010- 68138116		5	
		6	
zhgjctx@126.com		7	
		8	
		9	
		10	2020
		11	
		14	“ ”
		18	“ ”
		20	50



22	" "		
" "			53
25			
26			
27			
28	" "		58 " "
29			
30	" "		59
31			
32			
33			60 ---
			61
36		2020	
41			62
43	" "		12
45			
47	" "		
			64
			64
49		



”

“

”

“

”

“



“ ” “ ”

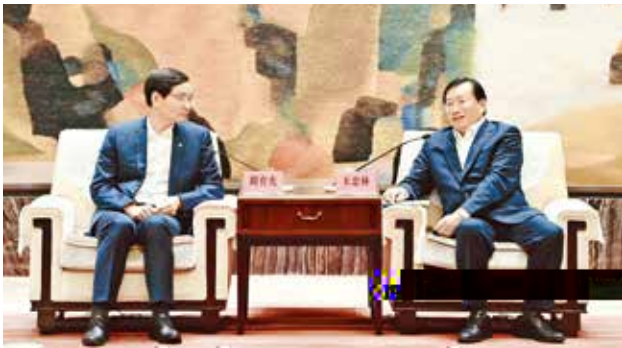
“ ”



“ ”

“ ”

“ ”



“ ” “ ”

“ ”

“ ”





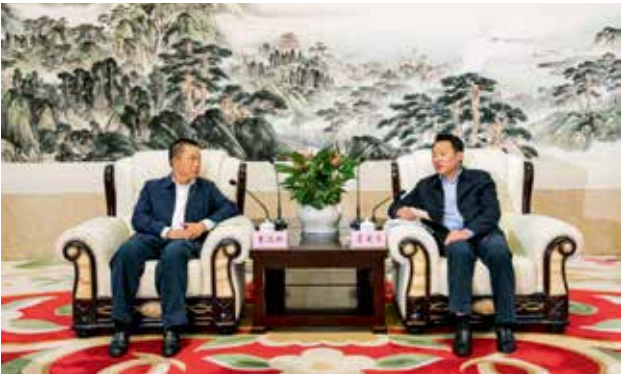
“ ”

“ ”

1-2

“ ”

“ ”





“ ”

“ ”
“ ”
“ ”



“ ”

“ ”

“ ”

“ ”





2020

“

”

“

”



—— 2020 500

“ 2020 500 ”

“ ”

500 47 2020 500 500 14 100 65
100 26



500

2020

œ

1- 8

11% "

" " "

2020

500

187

10





"
" 20

7

+

5 8

"

"

0.03



0.03

1.5

20

2019

1.23

3858

1000

80%

"

"



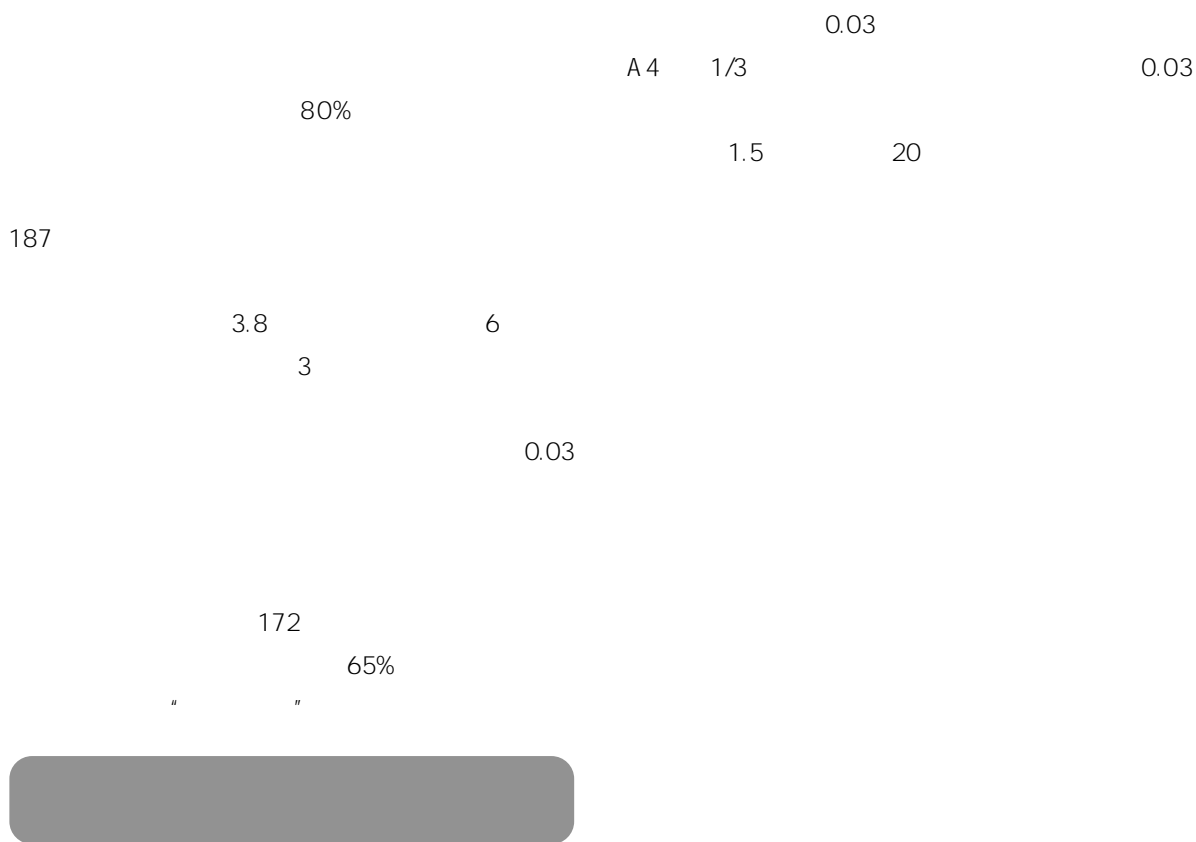


国务院新闻办公室
THE STATE COUNCIL INFORMATION OFFICE, P.R.C.



“

”



A4 1/3 0.03 0.03

1.5 20

20



" "



65%

37

28

" "

37

2019 5



" " " "

h

...

" 7 21"

¶

x

" "

" "

—— 2020

中国建材集团总经理 曹江林



C12+3

2010

"

"



“

”

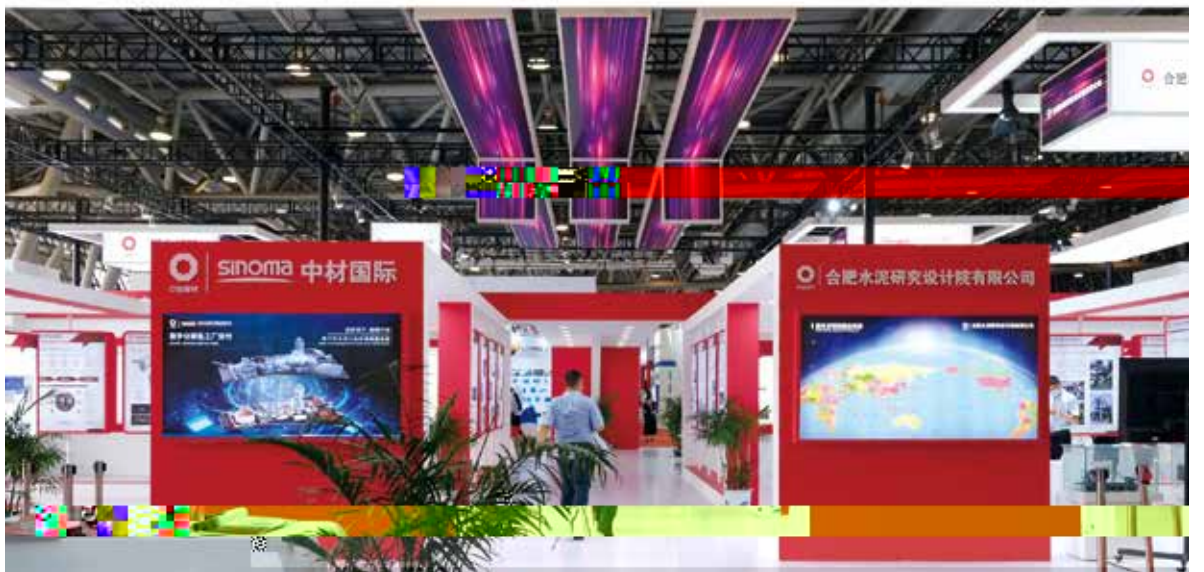
“

”

“

”

" " 2500 " +
 2006- 2012 "
 2016 " "



+ # # S" S"
 " S" S"

//
//

//
//





8 26

崑

洗

8 26

28

37





8 26

" "

"

" 湾

80

" "

祔

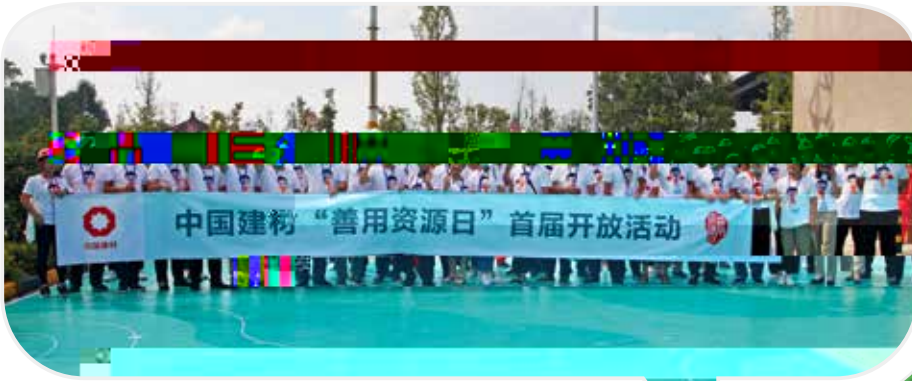
"

" "

" "

"





8 26

" "

" _ _

" "

" 3D "

50

1 ~7

" "

5000



		6.86%	12.6%
10.69%	20.89%		
		6.85%	12.6%
10.69%	20.89%	37%	



8

" " " " " " " "

8 26 9

150

60%

7000

5

9 30



" "



8 26

“ ” ”

“ ” ”

100%

BIM

“ ”





8 26

60

60

2008

25

1958

4

100

/



8 26

"

"

150









印记中国·2020

CHINESE SEAL CARVING 2020

2020

9 14

"

2020——

""

"

200

"

"

5

" "

" " "

3.83 3 23 "

400 65.2

" "

2019

5 1

1.04

72.66

50

" " " " " "

2500 "

" 5

2018 2 2019 3

" " "

" " "

" " "

46

"



84 "

2000 20 "

5 11



4

" "

83



" / /

"



2020

"

2500

"



0



“ ”
“ ”

“ ”

X

“ ”

“ ”

13
7

99.9999%

6

“ ”

“ ”

“ ”

.....

“ ”

“ ”

“ ”

2020





CT

3 1

1 27

2
CT

2000

1

70 70 70



--

3

" "

1994

" "

6 29

13

2

2020

13

" "

6 29





1 28

24



1 27

1 27

1 41

30

"

"

"

6 30

"

1 28

6



2 5
" "



" "

2 17 " "

10 " "

9504 " "

25800 174000

20 36

69 " "





400

" "

" "

" "

100 /

" "

300

2019

2020

63

2018 7

" "

90%

"

"

40 /

2000

" "



“ ”
 “ ”
 “ ”
 2019 8 “ ”
 520 13
 8



“ ”
 6
 2500





8.

" "

200
/ 200 100

7.

" "

500
15%

100

80%

6.

2019

669

100%

98%

2713

3000 5000

"

"

200

2014—2019

1950 2

15

43

900

	669	2788			
S" #&	&" #)			S*" "	
S" #	&& #&			%" "	
S" #(*# \$ (&" "	
S" #)	#&% ' &&	'		(')	%
S" #*	%&& #&*	(##	*" "	#" "
S" #+	S")*	% #%		#'')	#%
S" S"	#+)'	S" S"		#%&&	

2014



		9899	551	,
2020		9348		2012
"	"	10.2%	0.6%	9.6

1.

4.

6.

2.

5.

3.

2019 ,

2012



— —

“

”

2005 11

CNAS

CNAS

2005

260 36
2019



“ “ “
“ “ “
“ “ “

7

11

6%



20%

35%



ISO14000

ISO14000

10%





“ ” “ ”
“ ” “ ”

“

23 13
13



5 PAC

120
4500

NACHTETE

QQ " +"

DEVNYA

2017

masanyinga

" " " "

10 2200
17000
20

" "

" " " "

" " " " " "

10

20

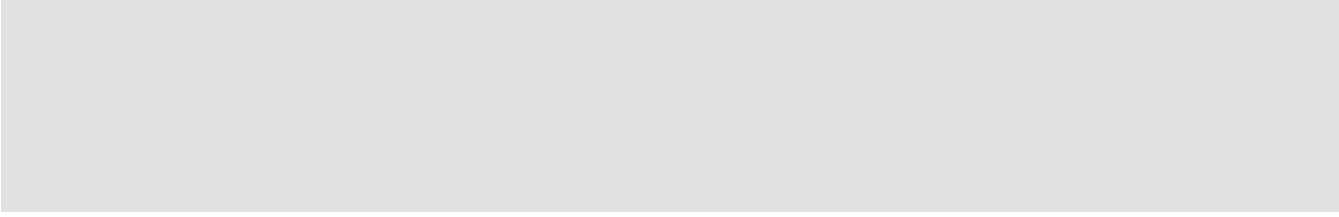
2.

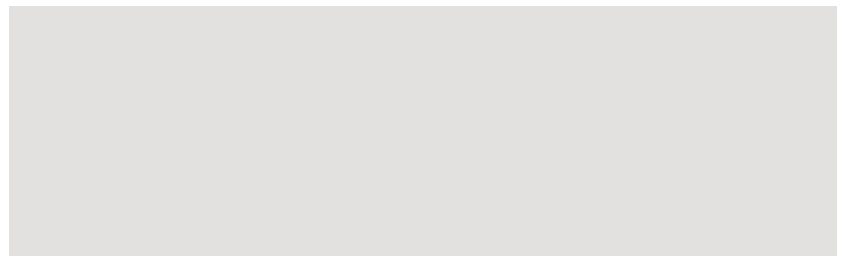
" "

" "

1.

" "

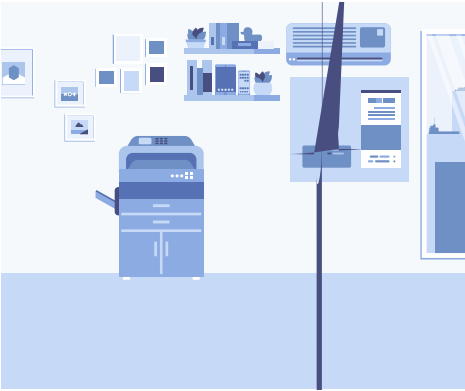




13

CRH380

380



一粥一饭，当思来处不易

拒绝餐饮浪费 为节约代言



按需点餐 按量取食

珍惜粮食
拒绝浪费

